

ANNA

Look. You can see Arendelle from here. When I left it was just flurries.

KRISTOFF

(looks out)

And now it's completely frozen...

ANNA

But it'll be fine. Elsa will thaw it.

KRISTOFF

Will she? You have no idea what your sister is capable of, do you?

ANNA

No.

(determined, unafraid)

C'mon.

(ANNA, KRISTOFF, OLAF, and SVEN exit. #22 – LET IT GO.)

SCENE 9: NORTH MOUNTAIN

(ELSA enters, alone, exhausted, and all cried out.)

Let It Go

1 7 ELSA:

The

9

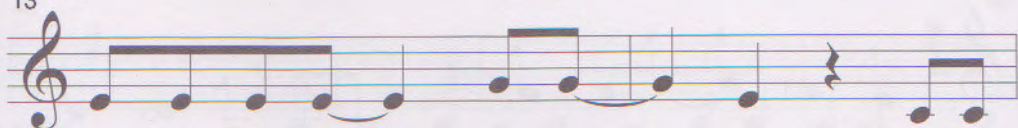
snow glows white on the moun-tain to - night, not a

11

foot - print _____ to be seen. _____ A

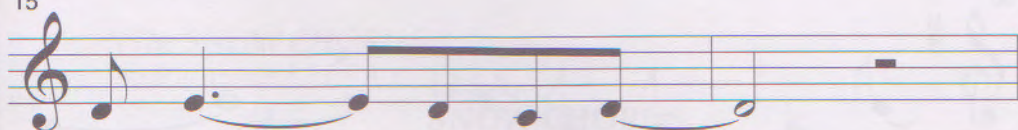
Detailed description: The image shows the first three lines of musical notation for the song 'Let It Go'. Each line is on a single staff with a treble clef and a 4/4 time signature. Line 1 starts with a whole rest for 7 measures, followed by a quarter note G4. Line 2 contains the melody for 'The snow glows white on the mountain to-night, not a'. Line 3 continues the melody for 'foot-print to be seen. A'. The lyrics are written below the notes.

13



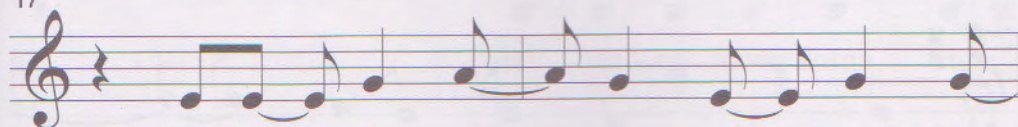
king-dom of i - so - la - tion, and it

15



looks like _____ I'm the queen. _____

17



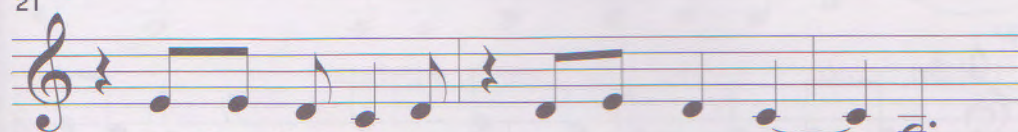
The wind__ is howl - ing like__ this swirl -

19



- ing storm__ in - side. _____

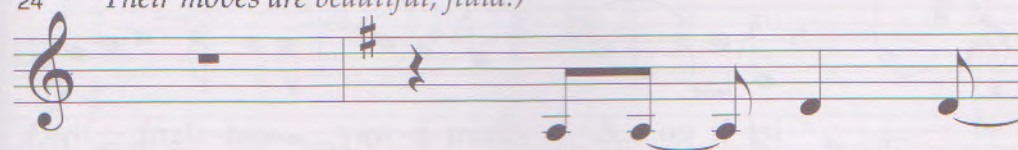
21



Could-n't keep it in, heav-en knows I _____ tried...

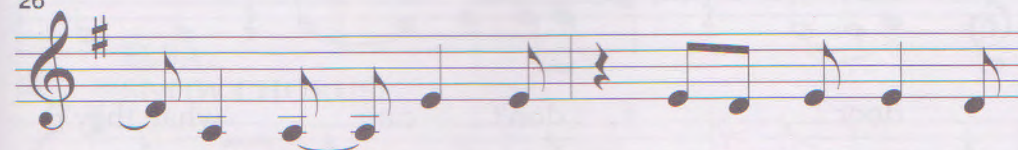
*(The SNOW CHORUS enters, one by one.**Their moves are beautiful, fluid.)*

24



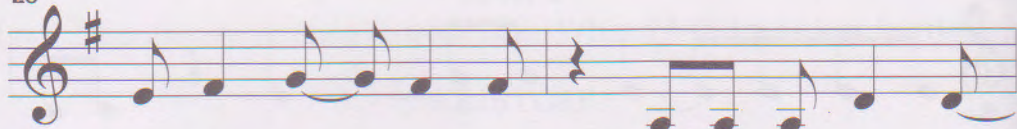
Don't let__ them in, _____

26



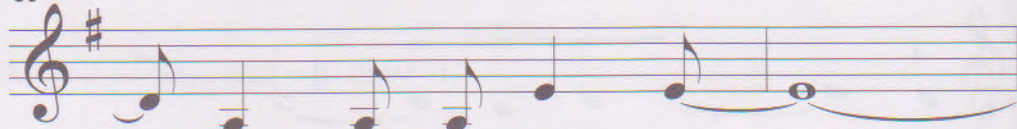
__ don't let__ them see, be the good girl you

28



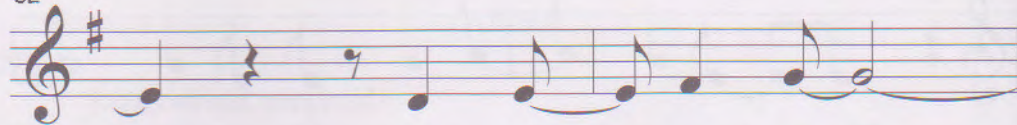
al-ways have__ to be. Con-ceal.__ Don't feel.

30



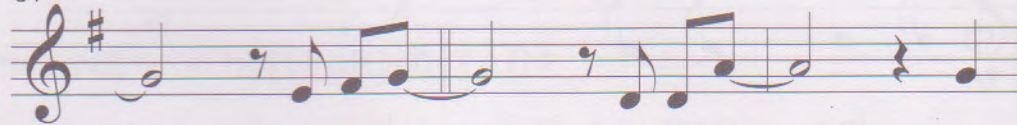
__ Don't let__ them know.____

32



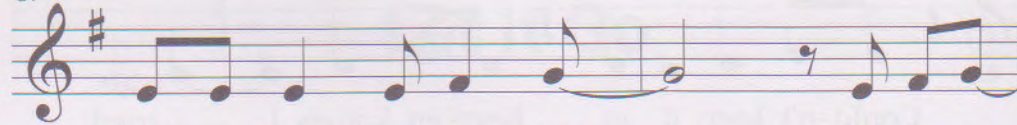
__ Well, now__ they know.____

34



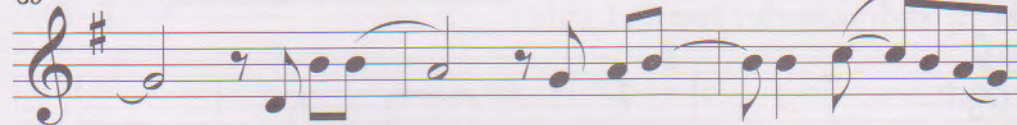
__ Let it go,____ let it go,____ can't

37



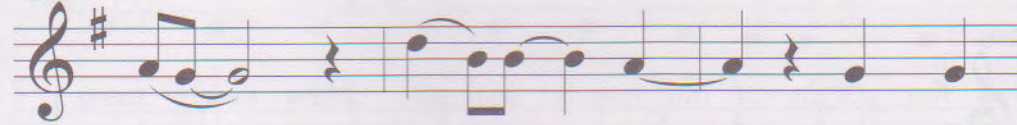
hold it back an - y - more.____ Let it go,

39



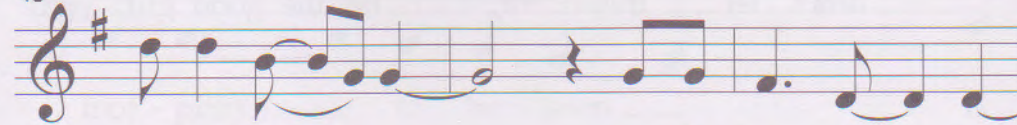
__ let it go.____ Turn a-way__ and slam__ the__

42



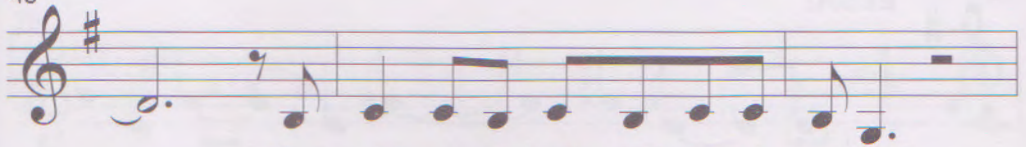
door.____ I__ don't__ care____ what they're

45



go-ing to____ say.____ Let the storm rage__ on.

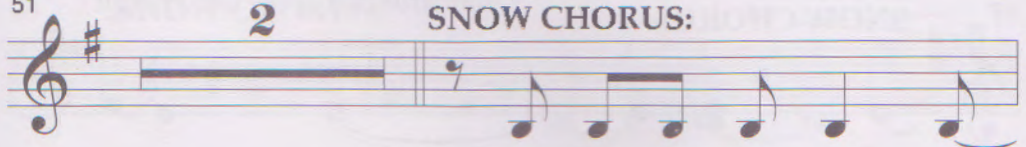
48



The cold nev-er both-ered me an - y - way.

(The SNOW CHORUS
swirls around ELSA.)

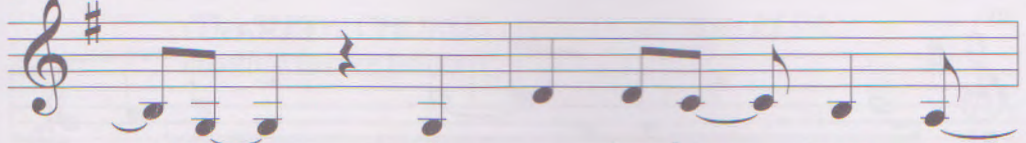
51



**ELSA,
SNOW CHORUS:**

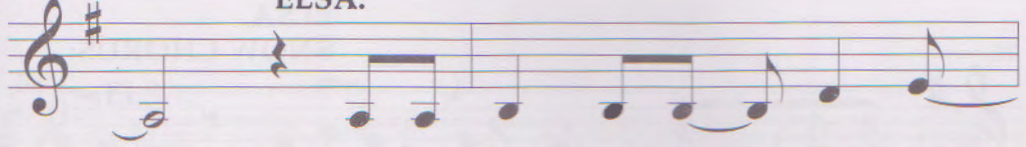
It's fun - ny how some dis -

54



- tance makes ev - 'ry-thing seem small

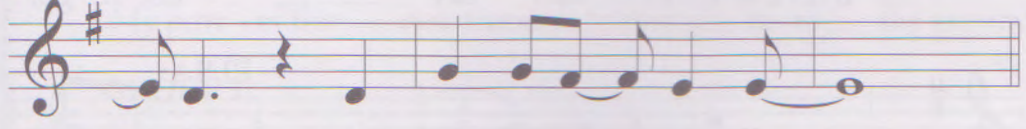
56



ELSA:

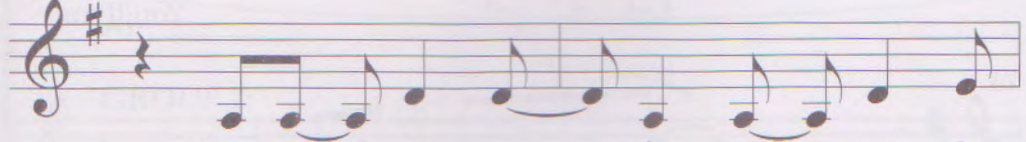
and the fears that once con - trolled

58



me can't get to me at all.

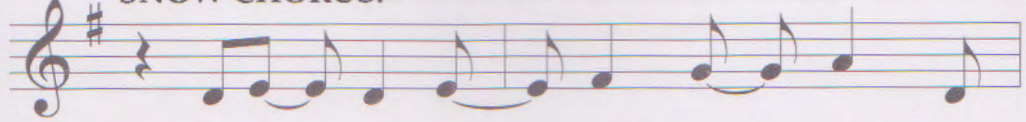
61



It's time to see what I can do,

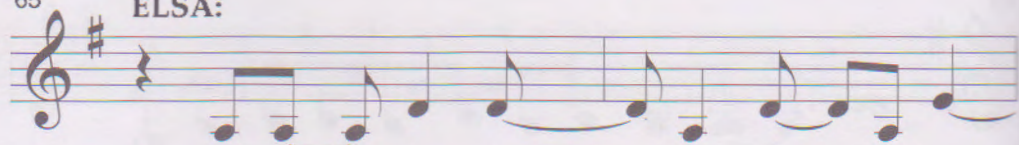
**ELSA,
SNOW CHORUS:**

63



to test the lim - its and break through.

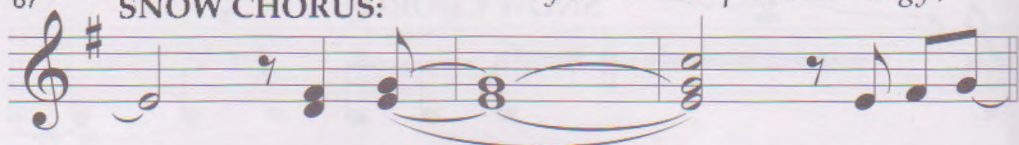
65 **ELSA:**



No right, — no wrong, — no rules — for me.

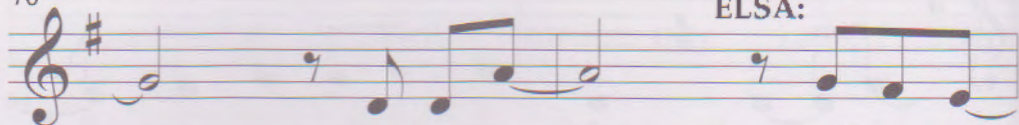
(More SNOW CHORUS enter, their movements picking up synchronized speed and energy.)

67 **ELSA, SNOW CHORUS:**



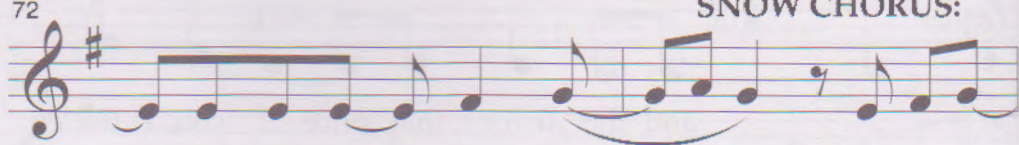
— I'm free! — Let it go!

70 **ELSA:**



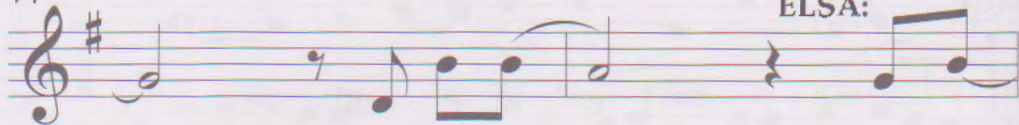
— Let it go! — I am one

72 **ELSA, SNOW CHORUS:**



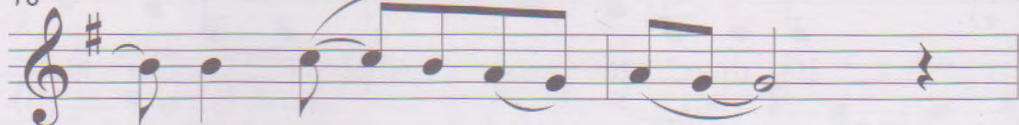
— with the wind — and sky. — Let it go!

74 **ELSA:**



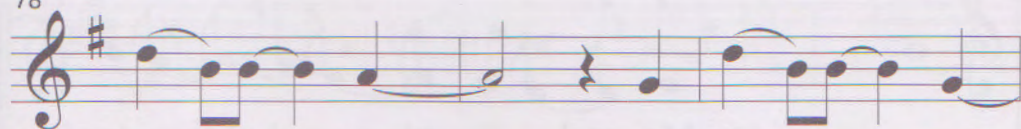
— Let it go! — You'll ne -

76



- ver see — me — cry. —

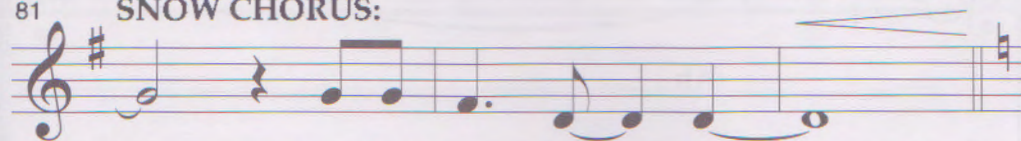
78



Here — I — stand, — and here — I'll — stay.

**ELSA,
SNOW CHORUS:**

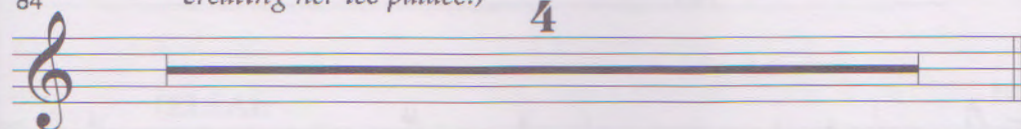
81



— Let the storm rage — on... —

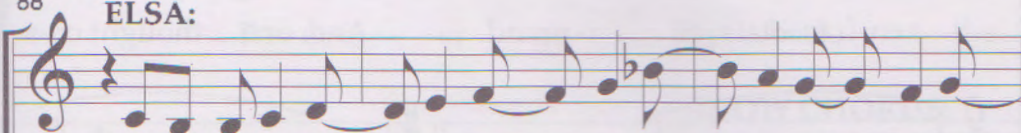
*(The SNOW CHORUS begins to surround ELSA,
creating her ice palace.)*

84



88

ELSA:



My pow - er flur - ries through the air — in - to — the ground.

GROUP 1:



Ah —

GROUP 2:



Ah —

91

My soul is spiraling in fro-

Ah

Ah

94

- zen fractals all a-round. And one thought crys-

Ah

Ah

- tal - liz - es like an i - cy blast: _____

(ELSA):

I'm nev - er go - ing back, the

SNOW CHORUS:

The

*(The mighty ice palace is complete.
ELSA stands in the middle, finally free.)*

past is in the past! _____

past is in the past! _____

104

— Let it go! — Let it go! — And I'll rise

— Let it go! — Let it go! — And I'll rise

107

— like the break of dawn. — Let it go! — Let it go!

— like the break of dawn. — Let it go! — Let it go!

110

— That per - fect girl — is — gone. —

— That per - fect girl — is — gone. —

113

(ELSA):

Here — I — stand — in the

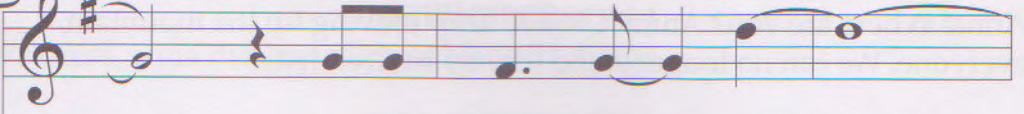
115



light ___ of ___ day. _____

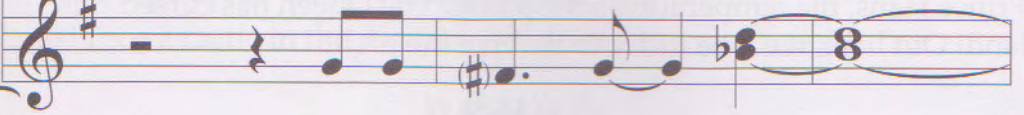
117

(ELSA):



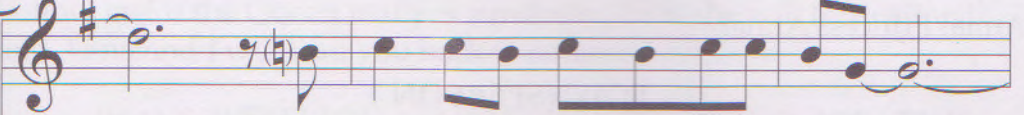
___ Let the storm rage ___ on! _____

SNOW CHORUS:



Let the storm rage ___ on! _____

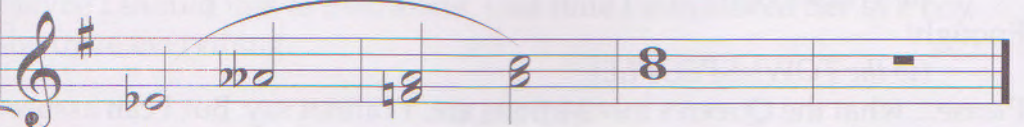
120



___ The cold nev-er both-ered me a - ny-way! _____



123



Oh _____ Ah!

(ELSA and the SNOW CHORUS exit.)