

HIDDEN FOLK

Kristoff! / Hello! / Hi!

PABBIE

Look – he brought a girl!

KRISTOFF

Oh. No. No. No. We're not a couple. I'm just helping her.

PABBIE

Not a couple? Are you absolutely sure about that?

KRISTOFF

Yes.

ANNA

Definitely not a couple.

PABBIE

Well, then what is the issue?

(#28 – FIXER UPPER.)

Fixer Upper

1 **PABBIE:**



Is it the grump-y way he talks?

KRISTOFF:

Hang on, now.

3 **BULDA:**



Or the clump-y way he walks?

KRISTOFF:

We need your help.

HIDDEN FOLK SOLO:

5



Or the

6

pear - shaped, square-shaped, weird - ness of his

7

ANNA:
Wait, what? **HIDDEN FOLK SOLO:**

feet? And though we

8

know he wash - es well — he al - ways

9

KRISTOFF:
Come on! **H.F. SOLO:**

ends up sor - ta smel - ly but you'll

10

nev - er meet a fel - low who's as

11

KRISTOFF:
We have a problem!

sen - si - tive — and sweet.

12

HIDDEN FOLK:

So he's a bit of a fix - er up - per,

13

H.F.
SOLO:

so he's got — a few flaws. Like his pe -

14

(H.F. SOLO):

H.F.
SOLO:

cul-i-ar brain, dear. ...that's a

OLAF:



His thing with the rein - deer..

15

(H.F. SOLO):



lit - tle out - side of na - ture's laws. —

16

HIDDEN FOLK:



So he's a bit of a fix - er up - per, but

17



this we're cer - tain of: _____ You can

18



fix this fix - er up - per up with a

19

KRISTOFF: Listen!



lit - tle bit__ of love!

20

PABBIE, BULDA:



We aren't say - ing you can change him, 'cause

21



peo - ple don't real - ly change.__ We're

22

HIDDEN
FOLK:

on - ly say - ing that love's__ a force that's

23



pow - er - ful__ and strange.__

24



Peo - ple make__ bad choi - ces if they're

25

GROUP 1:



mad or scared__ or stressed.__ But

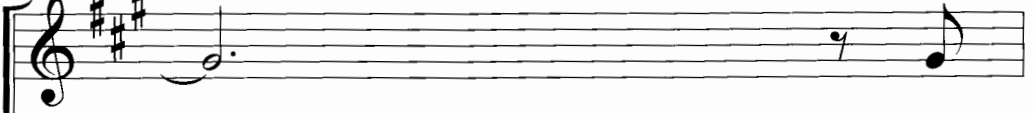
26



throw a lit - tle love__ their way__

27

(GROUP 1):



and

GROUP 2:



Throw a lit - tle love__ their way,

28



you'll bring out__ their best!__ True



you'll bring out__ their best!__ True

(KRISTOFF and ANNA
get swept up in the song.)

29



love brings out__ the best!__



love brings out__ the best!__

HIDDEN FOLK:

30

Ev - 'ry-one's a bit of a fix - er up - per,

31

that's what it's all — a - bout!

**H.F.
SOLO:**

Fath - er!

32

Sis - ter! Bro - ther! We need each o - ther to

33

raise us up — and round — us out!

34

Ev - 'ry-one's a bit of a fix - er up - per but

35

when push comes to shove... The on - ly

36

fix - er up - per fix - er that can fix a fix - er up - per is

37 **HIDDEN FOLK:**



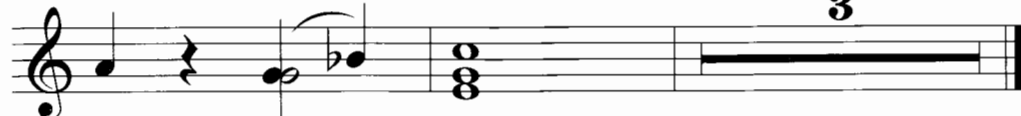
True! True! True, true, true, true! Love, true love.

40



Love, true — love. True love.

42



Love, true — love!

(ANNA suddenly falls to the ground. #29 – AN ACT OF TRUE LOVE.)

KRISTOFF

Anna! Help!

(PABBIE and BULDA rush to ANNA's side. They examine her and see ANNA clutching her heart.)

PABBIE

What is this? Another magic strike?! Why did you not tell me?

KRISTOFF

I tried!

BULDA

Anna, there is ice in your heart, put there by your sister.

PABBIE

If not removed quickly, to solid ice will you freeze, forever.

KRISTOFF

So remove it!

BULDA

If it was her head, we could. But the heart does not so easily let go of its pain.